

## Central Serous Retinopathy

**Physician:** Dr. Daniel Lavinsky | Porto Alegre, Rio Grande do Sul, Brazil

**Patient:** 61 years old, white, visual acuity 20/60 for more than 6 months.

No use of steroids or other systemic medications



### Treatment Parameters:

**Laser System:** PASCAL Streamline

**Wavelength:** 577 nm

**Power:** 120mW for titrated burn (100%)

**Exposure:** 15 ms

**Spot Size:** 200 μm

**Spacing:** 0.25 spot diameter

**Lens:** Volk Area Centralis lens

**Endpoint Management:** On

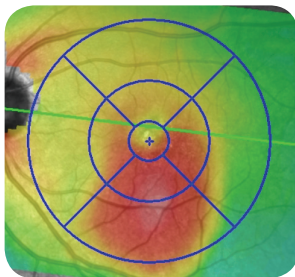
**EM Setting:** 30%

**Pattern Selection:** 4 x 4, 2 x 2, Macular Grid

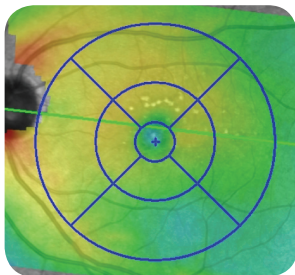
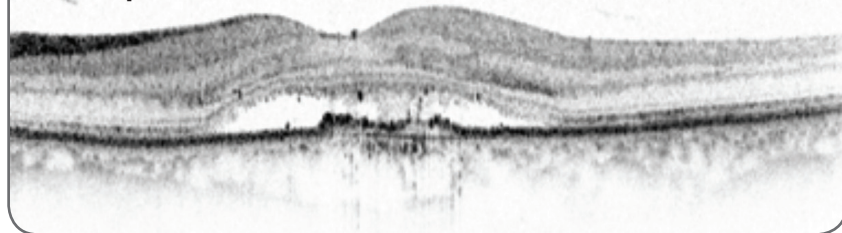
**Landmark:** On (Macula Grid); Off (4x4 & 2x2)

**Total spots:** 520 burns

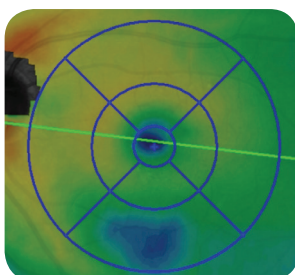
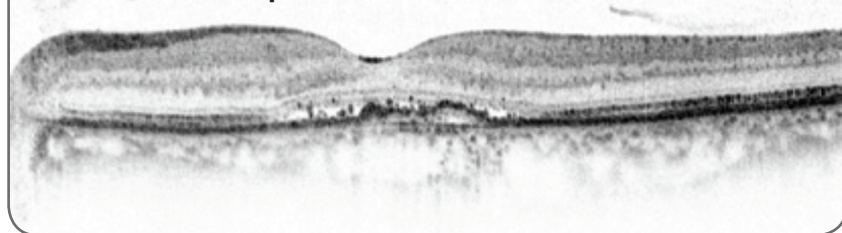
**Treatment Time:** 3 Minutes



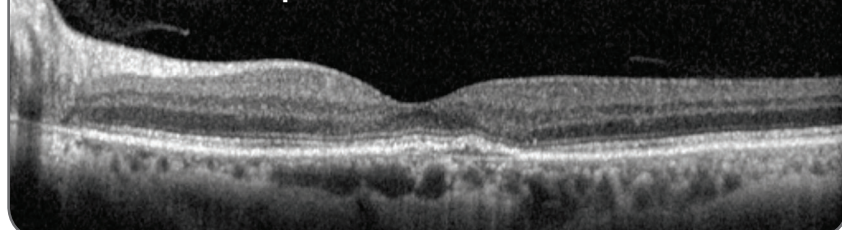
Pre-EpM VA 20/60



1 month Post-EpM VA 20/30



8 months Post-EpM VA 20/20

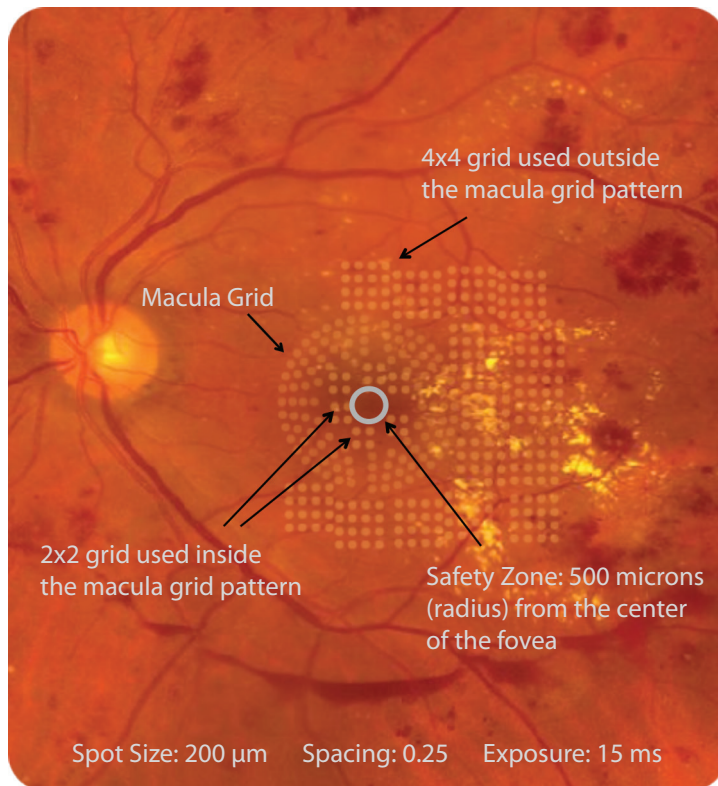


### Techniques and Tips:

When treating CSR, Dr. Lavinsky treats more concisely at the area of leakage and RPE abnormality by either fundus angiography or autofluorescence. He usually titrates to apply a slightly more intense burn and then decreases by 10-20 mW to get a 100% barely visible burn, waiting 3 seconds before defining the lesion.

## EM Treatment Area and Pattern Selection:

Image is not actual patient



The patterns on this fundus photo are shown to give the physician a visual reference of where the treatment was done. During actual Endpoint Management treatment, it is a physician's preference whether the burns are barely visible or completely invisible, with the exception of Landmark™ patterns turned on.

Patient case, parameters and techniques provided by the physician/author.

Topcon Medical Laser Systems assumes no responsibility for patient outcome or for physician oversight.



Endpoint Management is an optional upgrade on PASCAL Streamline and Synthesis lasers.

### HEADQUARTERS

#### TOPCON MEDICAL LASER SYSTEMS, INC.

3130 Coronado Drive  
Santa Clara, CA 95054 USA

Phone: +1 408.235.8200  
Toll Free (USA only): 1.888.760.8657  
Fax: +1 408.235.8259  
Website: [www.tmlsinc.com](http://www.tmlsinc.com)



© TOPCON MEDICAL LASER SYSTEMS, INC. • PASCAL is a registered trademark and Synthesis, Streamline, Landmark and Endpoint Management are trademarks of TOPCON MEDICAL LASER SYSTEMS, INC.